

# Model:GT-85-10

## Size

Diameter: 88.1mm

Height: 29.2mm

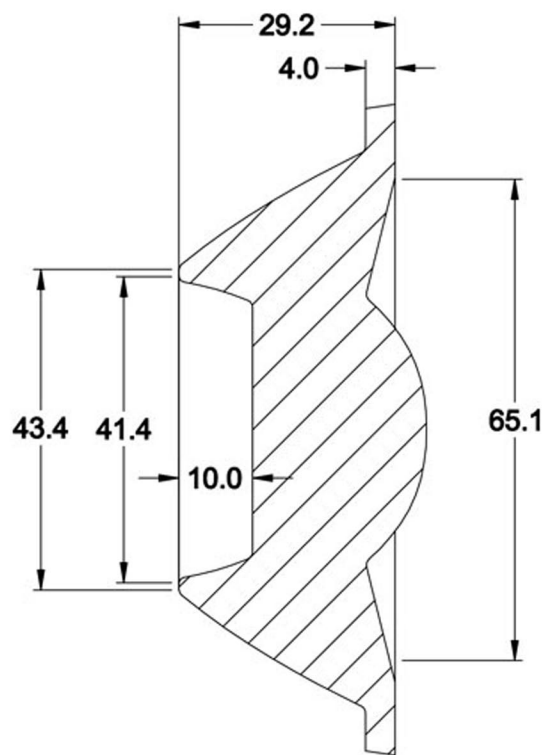
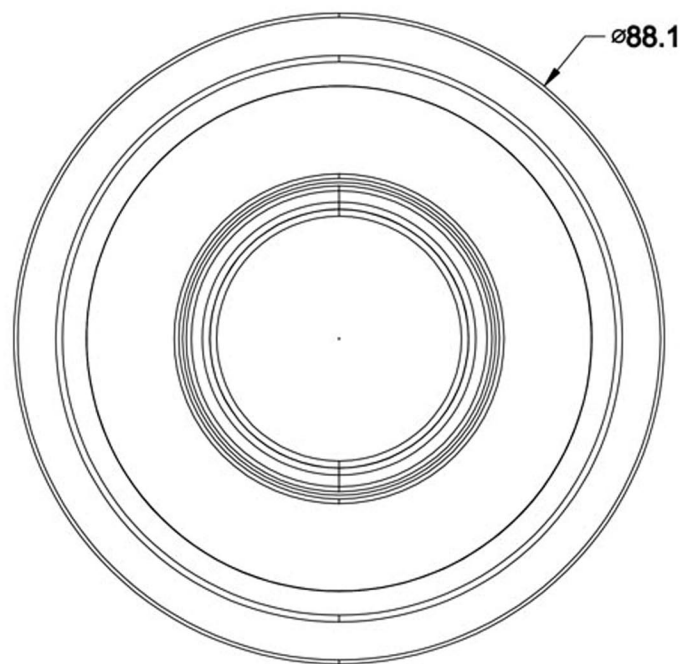
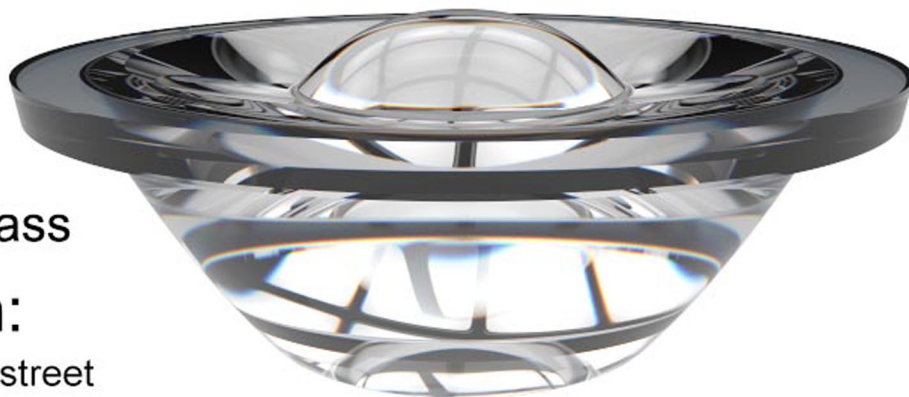
Edge thickness: 10mm

Angle: 30°

Material: Borosilicate glass

## Brief Introduction:

This product is used for the street lighting and other purpose with the 30W~150W integrated chip



>Product Detail

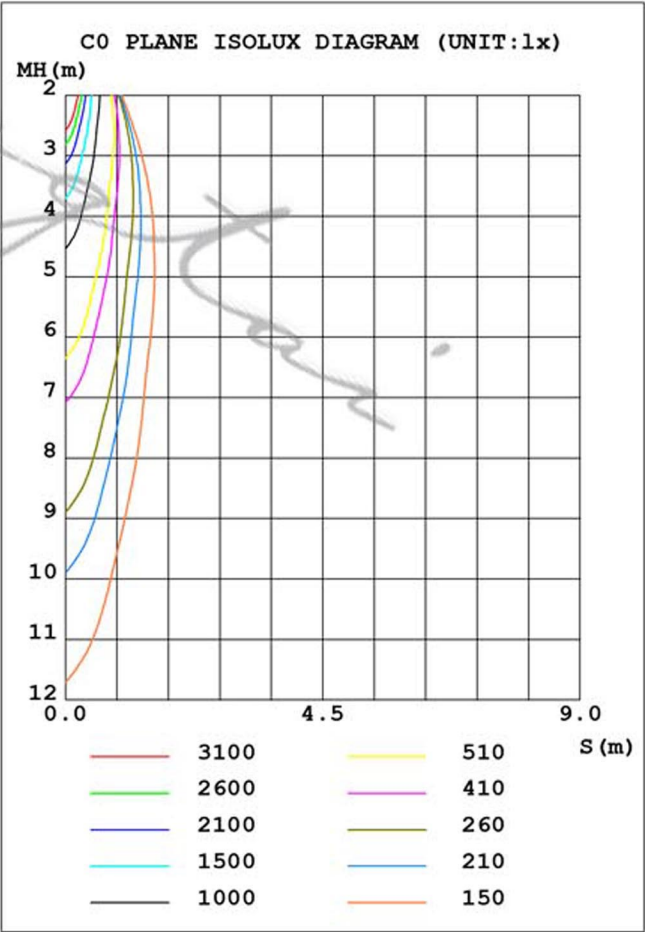
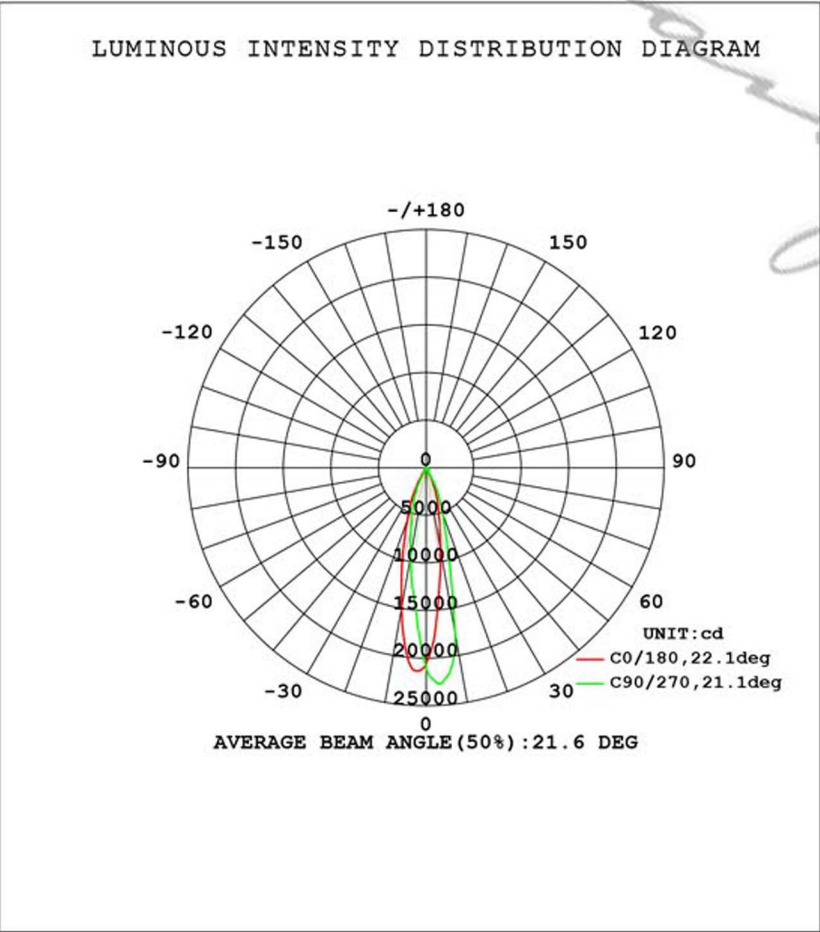


>More Features

LUMINAIRE PHOTOMETRIC TEST REPORT

Test:U:32.43V I:1.979A P:64.19W PF:1.000 Lamp Flux:5675.37x1 lm		
NAME: 85-10 2015.12.19	TYPE:	WEIGHT:
SPEC.:	DIM.:	SERIAL No.:
MFR.:	SUR.:	PROTECTION ANGLE:

DATA OF LAMP		PHOTOMETRIC DATA				Eff: 87.51 lm/W
MODEL	V18	Imax(cd)	23292	S/MH (C0/180)	0.48	
NOMINAL POWER(W)	60	LOR(%)	99.0	S/MH (C90/270)	0.30	
RATED VOLTAGE(V)	32.5	TOTAL FLUX(lm)	5616.9	η UP,DN(C0-180)	0.6,54.5	
NOMINAL FLUX(lm)	5675.37	CIE CLASS	DIRECT	η UP,DN(C180-360)	0.6,43.3	
LAMPS INSIDE	1	η up(%)	1.2	CIBSE SHR NOM	0.00	
TEST VOLTAGE(V)	32.4	η down(%)	97.8	CIBSE SHR MAX	1.00	



C Range: 0 - 360DEG  
C Interval: 22.5DEG  
Test Speed: MEDIUM  
Temperature:25.3DEG  
Operators:DAMIN  
Test Date:2015-12-19

γ Range: 0 - 180DEG  
γ Interval: 0.5DEG  
Test System:EVERFINE GO-SPEX500\_V1 SYSTEM V2.0.284  
Humidity:65.0%  
Test Distance:2.968m [K=1.0000]  
Remarks: